

Slim Duct (4000 BTU) Indoor Unit
For Heat-recovery/Heat-pump Airstage VRF System

Job Name		Date	
Location		Approval	
Engineer		Construction	
Submitted To		Unit No	
Submitted By		Drawing No	
Reference			

FEATURES

- Quiet 3-speed fan
- Slim design require small height clearance 9-3/4"
- Adjustable Static pressure from 0 to 0.36 in.WG
- Built-in high-lift drain pump
- Flexible air intake connection (Back or bottom)
- Built-in intake air filter
- Optional Auto louver grille
- Auxiliary heat operation capability
- 10 year Extended Warranty on parts and compressor. See Warranty



STATIC PRESSURE	
Static Pressure Range - in.WG [Pa]	0 ~ 0.12 (0 ~ 30)
Standard Static Pressure - in.WG [Pa]	0.04 (10)

CAPACITY	
Capacity - Cooling - Btu/h [kW]	4,000 (1.2)
Capacity - Heating - Btu/h [kW]	4,400 (1.3)

PIPING ACCESSORIES	
UTP-AX090A	Separation Tube - 2-Pipe - 90 MBH or Less
UTP-AX180A	Separation Tube - 2-Pipe - 91 to 180 MBH
UTP-AX567A	Separation Tube - 2-Pipe - 180 MBH or More

ELECTRICAL	
Power Source	208 / 230V, 1-Phase, 60Hz
Available Voltage Range - VAC	187 to 253
Input Power - W	26
Full Load Amps - FLA - A	0.28
Max Circuit Breaker - A	15
Minimum Circuit Ampacity - MCA - A	0.35

CONTROLLER	
UTY-RNRUZ2	Individual Touch Panel Controller (Wired Remote)
UTY-RSRY	Simple Remote (WITH Master Control) 2-Wire
UTY-RHRY	Simple Remote (WITHOUT Master Control) 2-Wire
UTY-LNHU	Wireless Remote Controller (requires IR Receiver)
UTY-DCGY	Central Remote Controller (100 units)
UTY-DTGYZ1	Touch Panel Controller with Internet (400 units)

FAN	
Fan Type	2X (Sirocco)
Airflow Rate - High - CFM [m³/h]	271 (460)
Airflow Rate - Medium - CFM [m³/h]	247 (420)
Airflow Rate - Low - CFM [m³/h]	218 (370)

ACCESSORIES	
#N/A	#N/A
UTD-GXSA-W	Auto Louver Grille for Slim Duct
UTY-XSZX	Remote Sensor for ducted units

SOUND PRESSURE	
Sound Pressure Level - dB(A)	21/23/25

WIRING	
Communication Cable	LonWorks (Fujitsu Pink Cable. See AE Bulletin 009)

WEIGHT AND DIMENSIONS	
Enclosure - Net Weight - lbs [kg]	32 (14.5)
Enclosure - Gross Weight - lbs [kg]	40 (18)
Dimensions - Net (H x W x D) - in [mm]	19-5/16×27-9/16×17-11/161 98×700×450
Dimensions - Gross (H x W x D) - in [mm]	9-13/16×36-5/8×22-13/16 250×930×580

PIPING	
Connection Pipe Diameter - Liquid (Flare) - in [mm]	ø 1/4 [6.35]
Connection Pipe Diameter - Gas (Flare) - in [mm]	ø 1/2 [12.70]
Connection Pipe Diameter - Drain (ID; OD) - in [mm]	ø 3/4 [19]
Drain-Pump	Built-in
Drain-Pump Lift - in [mm]	33 7/16 [850]

ETL	
-----	--

TEMPERATURE SETTINGS	
Operating Temp. Cooling (DB) - °F [°C]	64 to 90 [18 to 32]
Operating Temp. Heating (DB) - °F [°C]	50 to 86 [10 to 30]

Note: Specifications are based on the following conditions:
Cooling: Indoor temperature of 80°F (26.7°C) DB/67°F (19.4°C) WB, and outdoor temperature of 95°F (35°C) DB/75°F (23.9°C) WB. Heating: Indoor temperature of 70°F (21.1°C) DB/60°F (15.6°C) WB, and outdoor temperature of 47°F (8.3°C) DB/43°F (6.1°C) WB. Pipe length: 25ft. (7.5m), Height difference: 0ft. (0m) (Outdoor unit – indoor unit).



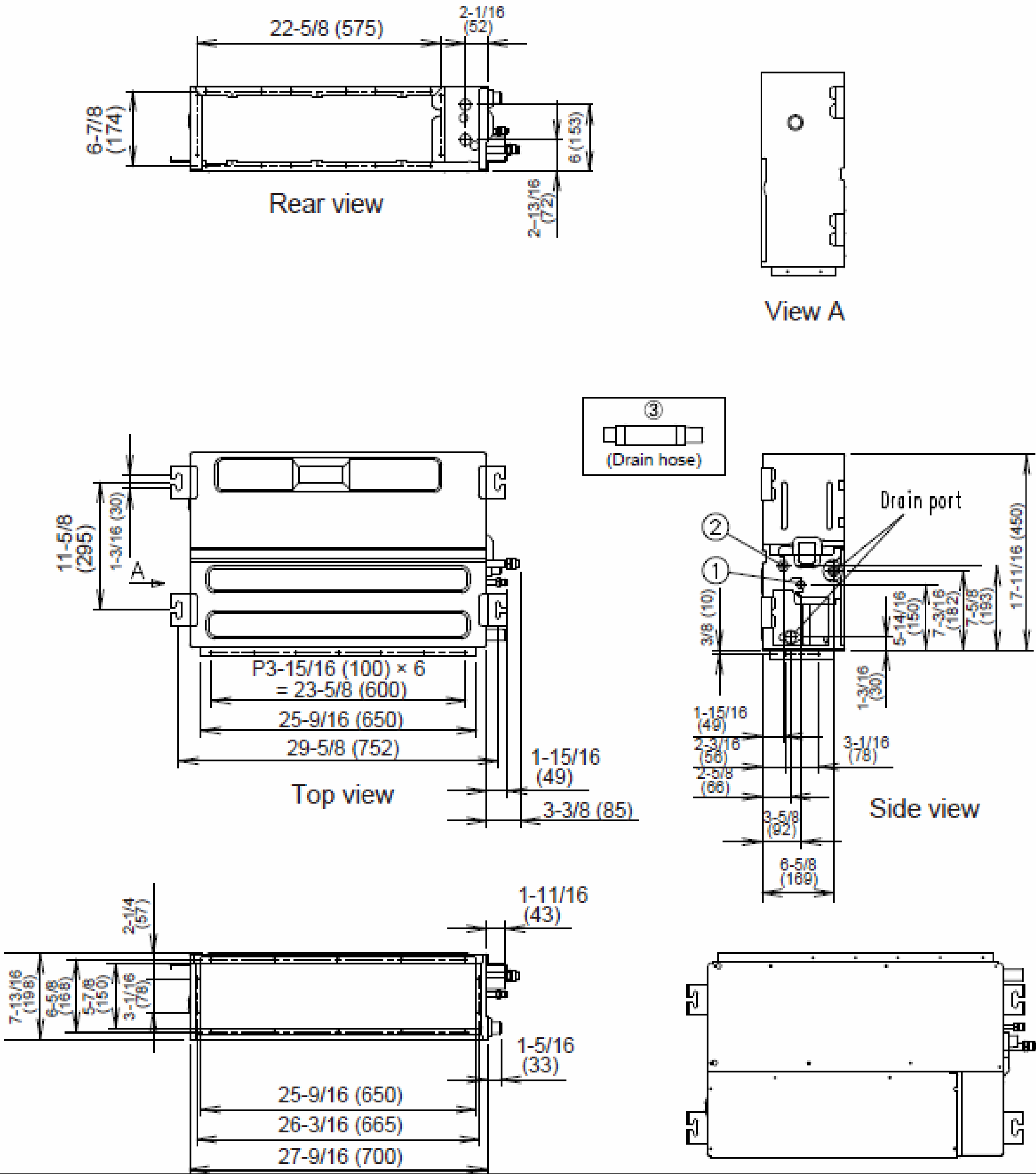
Fujitsu General America, Inc.
353 Route 46 West
Fairfield, NJ 07004
Toll Free: (888) 888-3424
Fax: (973) 836-0453
www.airstagevrf.com

SUBMITTAL ARUL4TLAV1

Slim Duct (4000 BTU) Indoor Unit
For Heat-recovery/Heat-pump Airstage VRF System

DIMENSIONS

Unit: In. (mm)



Fujitsu General America, Inc.
353 Route 46 West
Fairfield, NJ 07004
Toll Free: (888) 888-3424
Fax: (973) 836-0453
www.airstagevrf.com