

Slim Duct (18,000 BTU) Indoor Unit For Heat-recovery/Heat-pump Airstage VRF System

Job Name _____
 Location _____
 Engineer _____
 Submitted To _____
 Submitted By _____
 Reference _____

Date _____
 Approval _____
 Construction _____
 Unit No _____
 Drawing No _____

FEATURES

- Quiet 3-speed fan
- Slim design require small height clearance 9-3/4"
- Adjustable Static pressure from 0 to 0.36 in.WG
- Built-in high-lift drain pump
- Flexible air intake connection (Back or bottom)
- Built-in intake air filter
- Optional Auto louver grille
- Very low power usage
- Auxiliary heat operation capability
- 10 year Extended Warranty on parts and compressor. See Warranty Statement.



STATIC PRESSURE

Static Pressure Range - in.WG [Pa] 0 to 0.36 [0 to 90]
 Standard Static Pressure - in.WG [Pa] 0.10 [25]

PIPING ACCESSORIES

UTP-AX090A Separation Tube - 2-Pipe - 90 MBH or Less
 UTP-AX180A Separation Tube - 2-Pipe - 91 to 180 MBH
 UTP-AX567A Separation Tube - 2-Pipe - 180 MBH or More

CONTROLLER

UTY-RNRUZZ Individual Touch Panel Controller (Wired Remote)
 UTY-RSRY Simple Remote (WITH Master Control) 2-Wire
 UTY-RHRY Simple Remote (WITHOUT Master Control) 2-Wire
 UTY-LNHU Wireless Remote Controller (requires IR Receiver)

UTY-DCGY Central Remote Controller (100 units)
 UTY-DTGYZ1 Touch Panel Controller with Internet (400 units)

ACCESSORIES

UTD-GXSB-W Auto Louver Grille for Slim Duct
 UTY-TEKX External Switch Controller. Use with 3-Wire remotes only.
 UTY-XSZX Remote Sensor for ducted units

WEIGHT AND DIMENSIONS

Enclosure - Net Weight - lbs [kg] 49 [22]
 Enclosure - Gross Weight - lbs [kg] 60 [27]
 Dimensions - Net (H x W x D) - in [mm] 7-13/16 x 35-7/16 x 24-7/16
 [198 x 900 x 620]
 Dimensions - Gross (H x W x D) - in [mm] 10-7/8 x 46 x 30-3/8
 [276 x 1,168 x 772]

CAPACITY

Capacity - Cooling - Btu/h [kW] 18,000 [5.3]
 Capacity - Heating - Btu/h [kW] 20,000 [5.9]

ELECTRICAL

Power Source 208 / 230V, 1-Phase, 60Hz
 Available Voltage Range - VAC 187 to 253
 Input Power - W 83
 Full Load Amps - FLA - A 0.61
 Max Circuit Breaker - A 15
 Minimum Circuit Ampacity - MCA - A 0.76
 Fuse - A (V) 5 (250)

FAN

Fan Type 3X (Sirocco)
 Airflow Rate - High | Medium High - CFM [m³/h] 554 [940] | 483 [820]
 Airflow Rate - Medium | Medium Low - CFM [m³/h] 430 [730] | 371 [630]
 Airflow Rate - Low | Quiet - CFM [m³/h] 318 [540] | 277 [470]

SOUND PRESSURE

Sound Pressure Level - dB(A) 34/31/29/27/25/23

WIRING

Communication Cable LonWorks (Fujitsu Pink Cable. See AE Bulletin 009)

PIPING

Connection Pipe Diameter - Liquid (Brazing) - in [mm] ø 1/4 (6.35)
 Connection Pipe Diameter - Gas (Brazing) - in [mm] ø 1/2 (12.70)
 Connection Pipe Diameter - Drain (ID; OD) - in [mm] ø 3/4 [19]
 Drain-Pump Built-in
 Drain-Pump Lift - in [mm] 33 7/16 [850]

ETL

E.T.L. 91987

TEMPERATURE RANGES

Operating Temp. Cooling (DB) - °F [°C] 64 to 88 [18 to 31]
 Operating Temp. Heating (DB) - °F [°C] 50 to 88 [10 to 31]

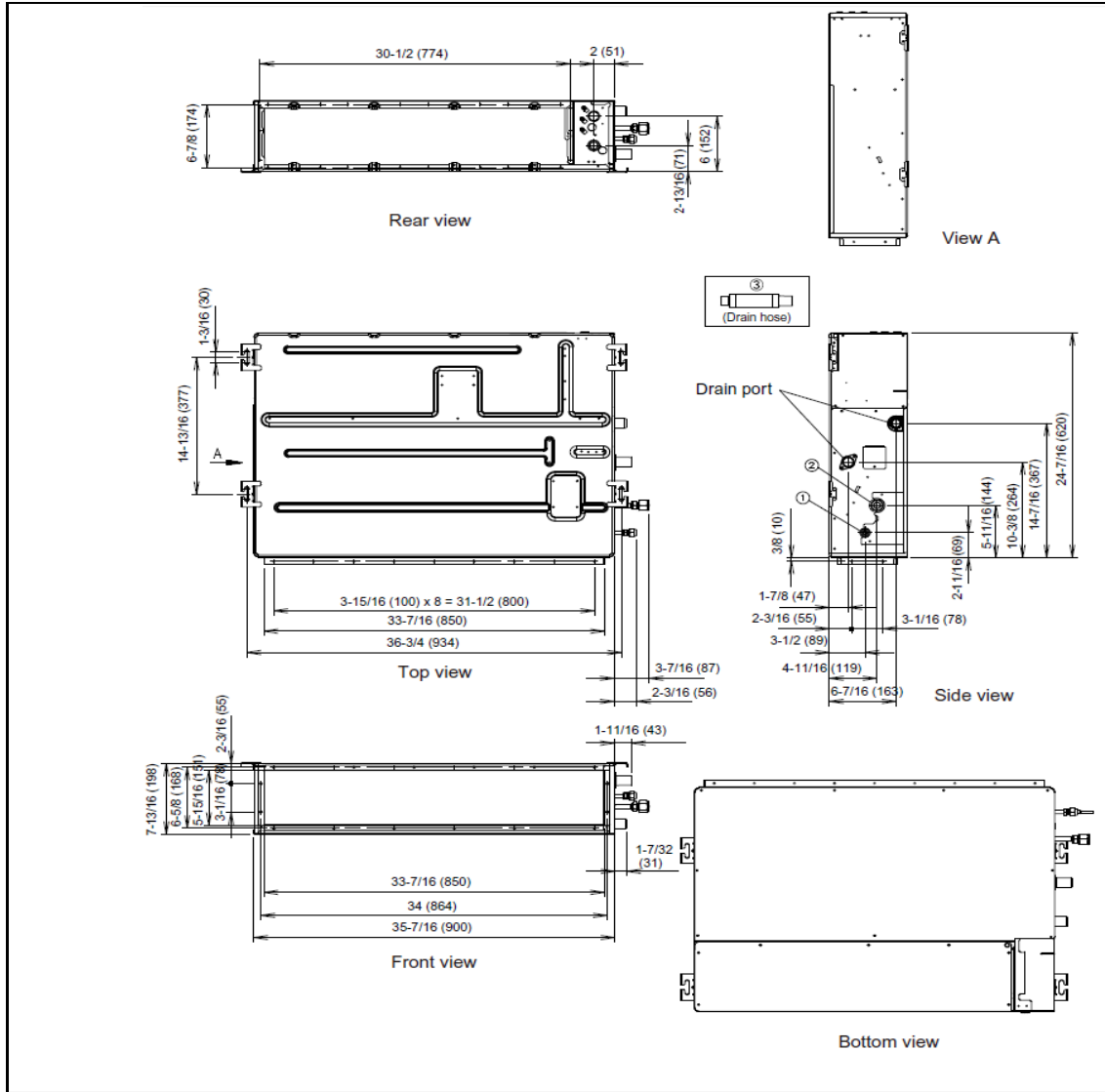
Note: Specifications are based on the following conditions:
 Cooling: Indoor temperature of 80°F (26.7°C) DB/67°F (19.4°C) WB, and outdoor temperature of 95°F (35°C) DB/75°F (23.9°C) WB. Heating: Indoor temperature of 70°F (21.1°C) DB/60°F (15.6°C) WB, and outdoor temperature of 47°F (8.3°C) DB/43°F (6.1°C) WB. Pipe length: 25ft. (7.5m), Height difference: 0ft. (0m) (Outdoor unit - indoor unit).

SUBMITTAL ARUL18TLAV2

Slim Duct (18,000 BTU) Indoor Unit
For Heat-recovery/Heat-pump Airstage VRF System

DIMENSIONS

Unit: In. (mm)



Fujitsu General America, Inc.
 353 Route 46 West
 Fairfield, NJ 07004
 Toll Free: (888) 888-3424
 Fax: (973) 836-0453
 www.airstagevrf.com