

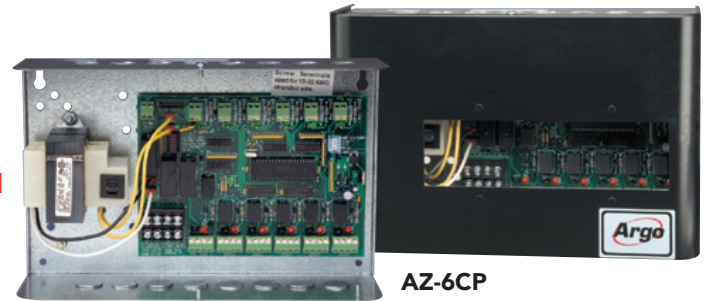


**Ideal for Indirect Hot Water Applications*

AZ-4CP/AZ-6CP

Four and Six Zone Valve Controls with Built-in Circulator or Zone Valve Priority Option

- Choice of circulator or zone valve for priority
- Option for tankless coil boiler applications
- Optimum performance with circulator priority, increasing hot water flow up to 20%



Application Flexibility

- Four (AZ-4CP) or six (AZ-6CP) zone valve controller with priority
- Switchable priority (ON/OFF)
- Priority zone is field configurable for use with either circulator or zone valve
- Controls three or four wire 24 Vac zone valves

Installation and Service Features

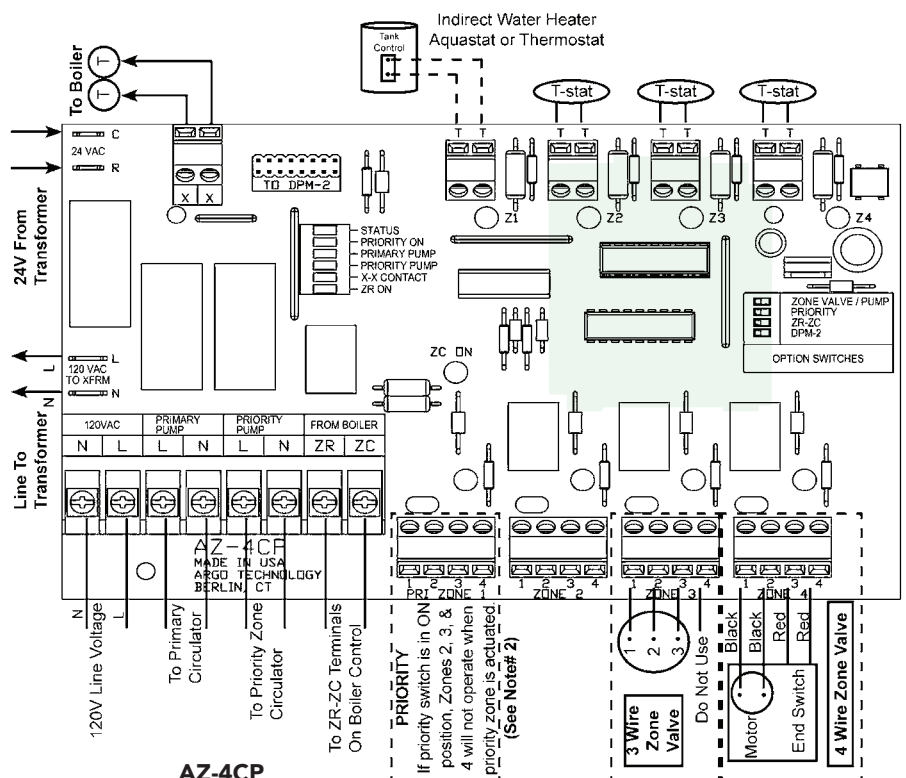
- Front window with clearly visible LED diagnostic lights showing zones calling and those satisfied
- Design is compatible with all types of thermostats, and ensures that relay energize with power robbing thermostats
- Auto reset fuse prevents service calls
- Expandable to 10 zones with priority utilizing two AZ Controls
- Clearly marked terminal for easy and accurate installation
- Five year limited warranty, 100% factory tested

Electrical Specifications

MODEL NUMBER	ZONES	TRANSFORMER VOLTAGE	RELAY SWITCHING ACTION	MAX. TOTAL AMP DRAW
AZ-4CP	4	120 V/60 Hz/ 40 VA	SPST	7.2 A
AZ-6CP	6	120 V/60 Hz/75 VA	SPST	7.2 A

Wiring Diagram Notes:

- The switching relay terminals are approved for use with copper wires only. Torque terminal block screws 6 to 7 inch pounds.
- When using a priority zone circulator, a jumper is required between terminals 3 and 4 of Priority Zone 1. This jumper is not required when using a zone valve.



AZ-3/AZ-5 Three and Five Zone Valve Controls



Electrical Specifications

MODEL NUMBER	ZONES	TRANSFORMER VOLTAGE	END SWITCH CONTACT RATING
AZ-3	3	120 V/60 Hz/ 40 VA	5 A-1/8 hp @ 120 VAC
AZ-5	5	120 V/60 Hz/ 75 VA	5 A-1/8 hp @ 120 VAC

Application Flexibility

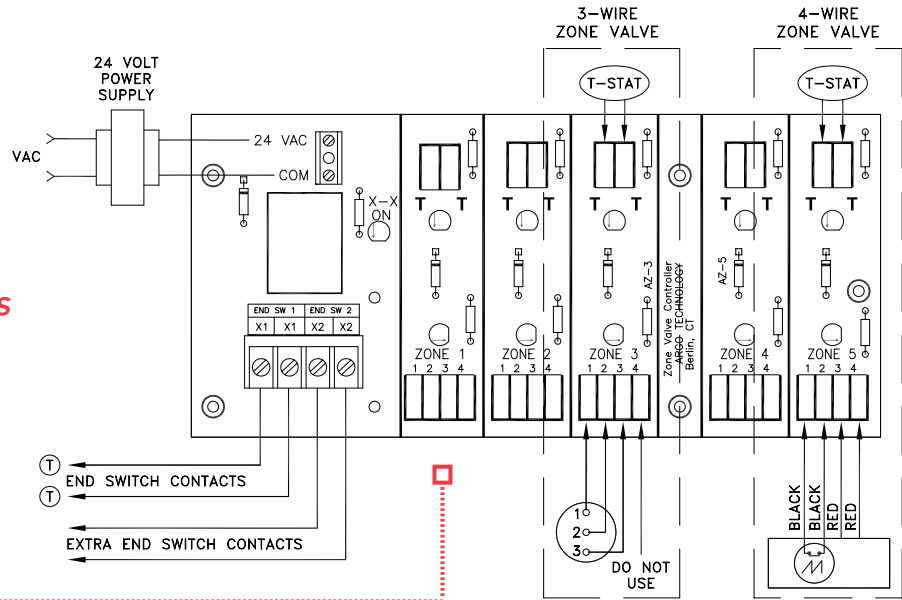
- Three (AZ-3) or five (AZ-5) zone valve controller
- Controls three or four wire 24v zone valves

Installation and Service Features

- LED diagnostic lights for easy troubleshooting
- Clearly marked terminal for easy and accurate installation
- 5 year limited warranty, 100% factory tested

Wiring Diagram Notes:

Install with jumper between terminals 3 and 4 when using zone valve without an end switch.



DPM2 Outdoor Reset Control

The DPM2 monitors outside temperature and adjusts boiler water temperature to match the heating demand, maximizing efficiency and reducing boiler usage.

- Simple plug 'n play data port ribbon connection when used in conjunction with any Argo Relay or Zone Valve Control
- Or can work with most competitors' relays
- Reduces heating costs an average of 10% to 15% a year (depending on climate).



STANDARD EQUIPMENT:



Outdoor Sensor with Shield



Strap-on Supply Water Sensor



Data Port Ribbon Cable Connector



ECR International: 2201 Dwyer Avenue, Utica, NY 13501

Tel. 315 797 1310 or 800 325 5479 Fax. 315 724 9319 www.ecrinternational.com

In Canada, Morden National Sales & Marketing: Tel. 519 627 0791 Fax. 866 835 6667 www.mordennational.com

All specifications subject to change without notice.

©2017 ECR International, Inc.

PN 240005997 REV. 6/17