

Inverter Driven Heat Pump

24,000 BTU Single Zone Ceiling Suspended System

Job Name _____
 Location _____
 Engineer _____
 Submitted To _____
 Submitted By _____
 Reference _____

Date _____
 Approval _____
 Construction _____
 Unit No _____
 Drawing No _____

PRODUCT FEATURES

Auto Changeover
 24 Hr. Timer
 Auto Restart Function
 Automatic Defrost Function
 Economy Mode
 Minimum Heat Mode



MODEL NUMBERS

Indoor Unit	ABUH24LUAS
Outdoor Unit	AOUH24LUAS1
System	24LUAS1B

EFFICIENCIES

SEER			--
SEER 2			21.5
EER			--
EER 2			12.3
HSPF			--
HSPF 2 (IV) / HSPF 2 (V)			10.5/8.4
COP	kW/kW		--
COP	Btu/hW		--
COP2	kW/kW		3.88
COP2	Btu/hW		13.2

OUTDOOR TEMPERATURE OPERATION RANGE

Cooling	*F(°C)	-5 to 115 (-21 to 46)
Heating*		*-5 to 75 (-21 to 24)

CAPACITIES

Cooling	Rated	Btu/h	24000
	Min.—Max.		5,400–28,000
Heating	Rated		27000
	Min.—Max.		5,400–32,000

LINESET REQUIREMENTS

Connection Method	Flare		
Liquid	in (mm)		Ø3/8 (Ø9.52)
Gas			Ø5/8 (Ø15.88)
Pre-charge length	ft (m)		66 (20)
Minimum Length			16 (5)
Max. length			164 (50)
Max. height difference			98 (30)

INDOOR DIMENSIONS & WEIGHT

Net (H x W x D)	in (mm)	9-1/4 x 54-3/4 x 27-3/4 (235 x 1,390 x 705)
Gross (H x W x D)		13 x 58-1/16 x 32-1/2 (330 x 1,475 x 825)
Net Weight	lb (kg)	68 (31)
Gross Weight		90 (41)

OUTDOOR DIMENSIONS & WEIGHT

Net (H x W x D)	in (mm)	31 x 37 x 12-5/8 (788 x 940 x 320)
Gross (H x W x D)		38-1/16 x 40-7/16 x 17-1/2 (966 x 1,027 x 445)
Net Weight	lb (kg)	117 (53)
Gross Weight		134 (61)

* System continues to operate below rated outdoor operation temperature range, subject to varying conditions. System has no low temperature cut out. Capacity is not tested outside of the rated temperature range.

Warranty Information



7 Year Compressor, 5 Year Parts out-of-the-box Warranty



10 Year Compressor, 10 Year Parts Warranty when registered within 60 days of installation in a residence



12 Year Compressor, 12 Year Parts Warranty when registered within 60 days of installation in a residence, and installed by a Fujitsu Elite contractor

ACCESSORIES

UTY-RNRUZ-Series	Wired Remote Controller
UTY-RSRY	Simple Remote Controller
UTY-RHRY	Simple Remote Controller
UTY-LBTUH	IR Receiver Kit with Wireless Remote Controller
UTZ-PU1EBB	Drain Pump Unit
UTP-FX35A	Auxiliary Pipe Assembly
UTY-XWZXZG	External Connect Kit
UTY-XCSX	External Input and Output PCB
UTZ-GXEA	External Input and Output PCB Box
UTY-TFSXJ4	WLAN Adapter
UTY-VMSX	Modbus Converter
UTY-VKSX	KNX Converter
UTY-TTRXZ1	Thermostat Converter
UTY-VTGX	Network Converter
UTY-TERX	External Switch Controller

Due to continuous product improvements, specifications are subject to change without notice. Please log in to the Fujitsu Portal for the most up-to-date documentation
<https://connect.fujitsugeneral.com>

Effective Date: 5/7/2024

Fujitsu General America, Inc. • 342 Changebridge Rd, Pine Brook, NJ 07058 • Toll Free: (888) 888-3424 • www.fujitsugeneral.com

Inverter Driven Heat Pump

24,000 BTU Single Zone Ceiling Suspended System

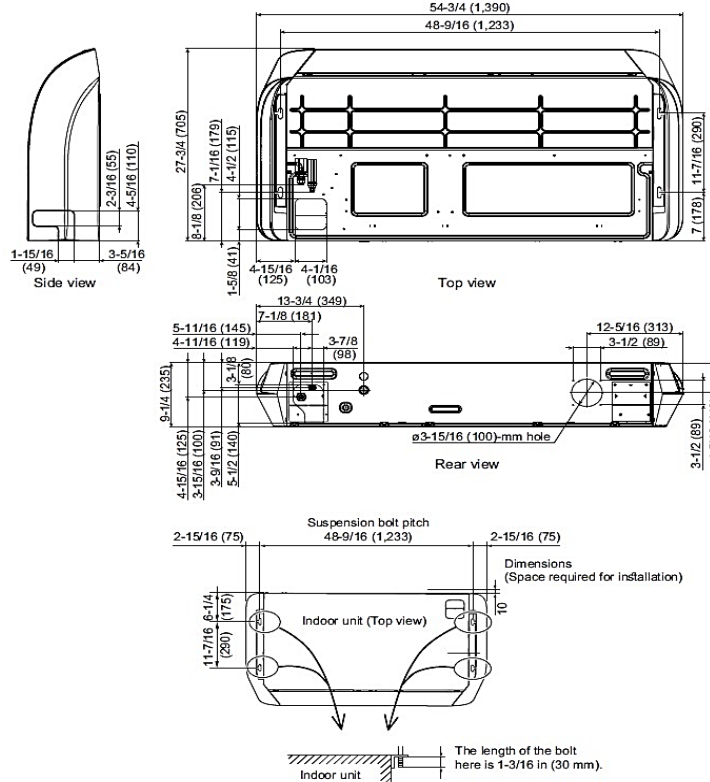
FAN DATA				
Indoor Unit Airflow rate	Cooling	HIGH	CFM (m3/h)	724 (1,230)
		MED		583 (990)
		LOW		506 (860)
		QUIET		412 (700)
	Heating	HIGH		724 (1,230)
		MED		583 (990)
		LOW		506 (860)
		QUIET		412 (700)
Outdoor Unit Airflow rate	Cooling			2,187 (3,715)
	Heating			2,187 (3,715)
SOUND PRESSURE				
Indoor Unit	Cooling	HIGH	dB (A)	41
		MED		36
		LOW		32
		QUIET		29
	Heating	HIGH		41
		MED		36
		LOW		32
		QUIET		29
Outdoor Unit	Cooling			52
	Heating			54
REFRIGERANT				
Type				R410A
Charge	lb oz			4 lb 10 oz
	g			2100
Oil Type				POE (RB68)

ELECTRICAL SPECIFICATIONS				
Voltage/Frequency/Phase		208/230 V~ 60 Hz		
Available Voltage Range		187~253 V		
Current	Cooling	Rated	A	8.7
	Heating	Rated		9
Maximum Operating Current		Cooling		15.8
		Heating		15.8
Starting current				10.3
MCA				19.2
Maximum Circuit Breaker				20
Input Power	Cooling	Rated	kW	1.95
		Min.--Max.		0.42~2.82
	Heating	Rated		2.04
		Max.		3.24
Power Factor	Cooling		%	97.5
	Heating			98.6
OTHER				
Moisture Removal		pints/h (L/h)	6.1 (2.9)	
Energy Star			No	
Drain hose	Material		PVC	
	Tip diameter	in (mm)	Ø1/2 (Ø13.0) (I.D.) Ø5/8 to Ø11/16 (Ø16.0 to Ø16.7)	
Operation Range	Cooling	°F (°C)	64 to 90 (18 to 32)	
		%RH	80 or less	
	Heating	°F (°C)	60 to 86 (16 to 30)	

DIMENSIONS:

Indoor Unit

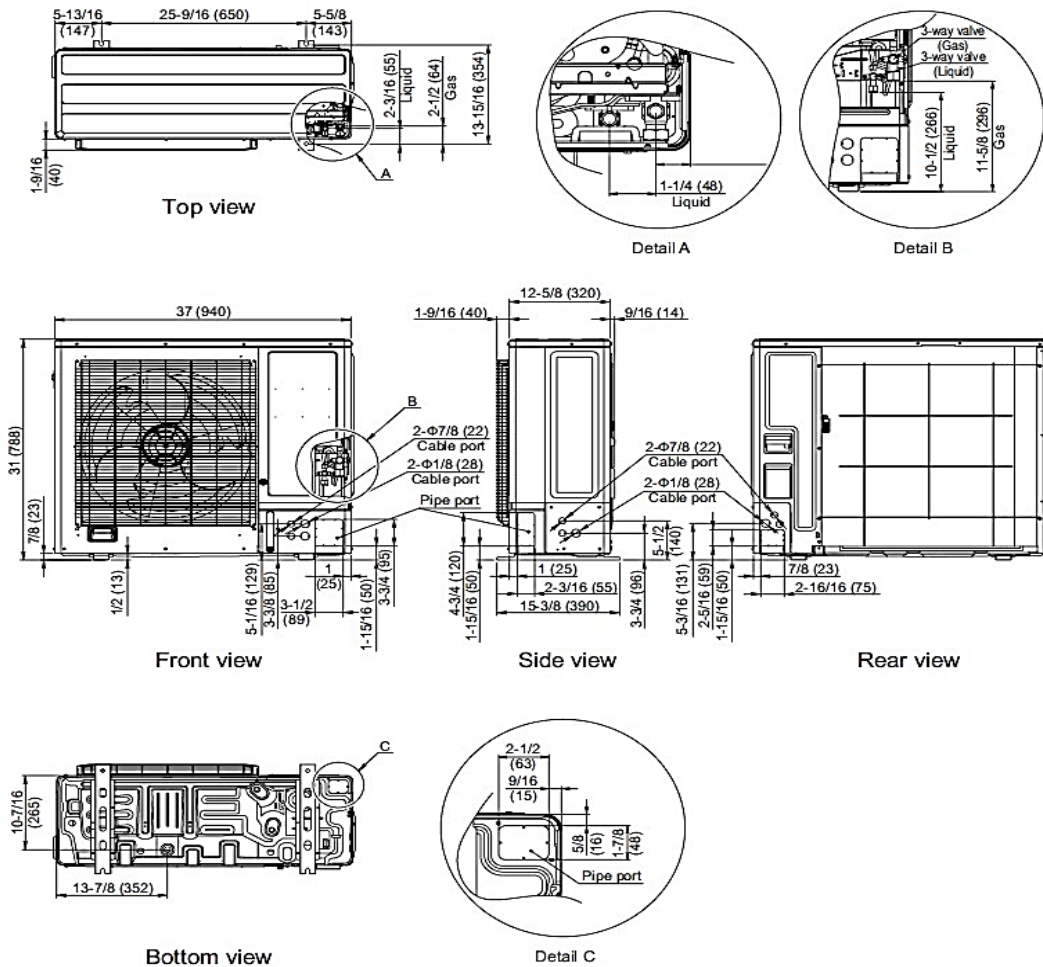
Units: In. (mm)



DIMENSIONS

Units: In. (mm)

Outdoor Unit



The Fujitsu logo is a worldwide trademark of Fujitsu General Limited. The Airstage logo and name is a worldwide trademark of Fujitsu General Limited and is a registered trademark in Japan, the USA and other countries or areas. Copyright 2024 Fujitsu General America, Inc. Fujitsu's products are subject to continuous improvements. Fujitsu reserves the right to modify product design, specifications and information in this brochure without notice and without incurring any obligations.

Note: Specifications are based on the following conditions:
 Cooling: Indoor temperature of 80°F (26.7°C) DB/67°F (19.4°C) WB, and outdoor temperature of 95°F (35°C) DB/75°F (23.9°C) WB. Heating: Indoor temperature of 70°F (21.1°C) DB/60°F (15.6°C) WB, and outdoor temperature of 47°F (8.3°C) DB/43°F (6.1°C) WB. Pipe length: 25ft. (7.5m), Height difference: 0ft. (0m) (Outdoor unit – indoor unit).