

# PRODUCT INFORMATION PACKET

**FASCO**<sup>®</sup>

Model No:  
Catalog No: A272  
70625783.BLOWER...2 SPD.  
Draft Inducer



Regal and Fasco are trademarks of Regal Beloit Corporation or one of its affiliated companies.  
©2019 Regal Beloit Corporation, All Rights Reserved. MC017097E

**REGAL**<sup>®</sup>



### Nameplate Specifications

Voltage	<b>208/230 V</b>	Motor Type	<b>Permanent Split Capacitor</b>
Overload Protector	<b>Thermally</b>	Speed	<b>3500 RPM</b>
Current	<b>0.65 A</b>	Number of Speeds	<b>2</b>
Frequency	<b>60/50 Hz</b>	Phase	<b>1</b>
Ambient Temperature	<b>40 °C</b>	UL	<b>Yes</b>
Insulation Class	<b>B</b>	CSA	<b>Yes</b>

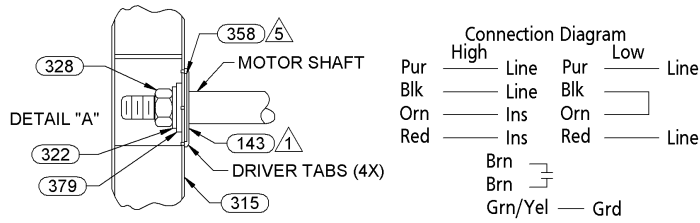
### Technical Specifications

Blower Outlet Shape	<b>Round</b>	Motor Enclosure	<b>Open Fan Cooled</b>
Blower Outlet Flange	<b>Yes</b>	Bearing Type	<b>Ball</b>
Outline Drawing	<b>OUTLINE</b>	Connection Diagram	<b>CONNECTION</b>

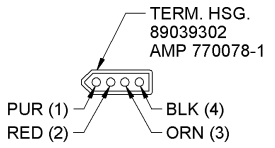
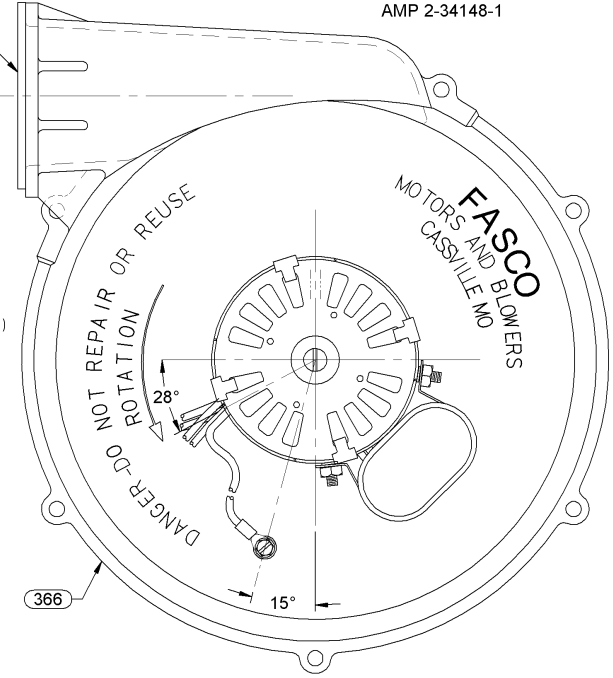
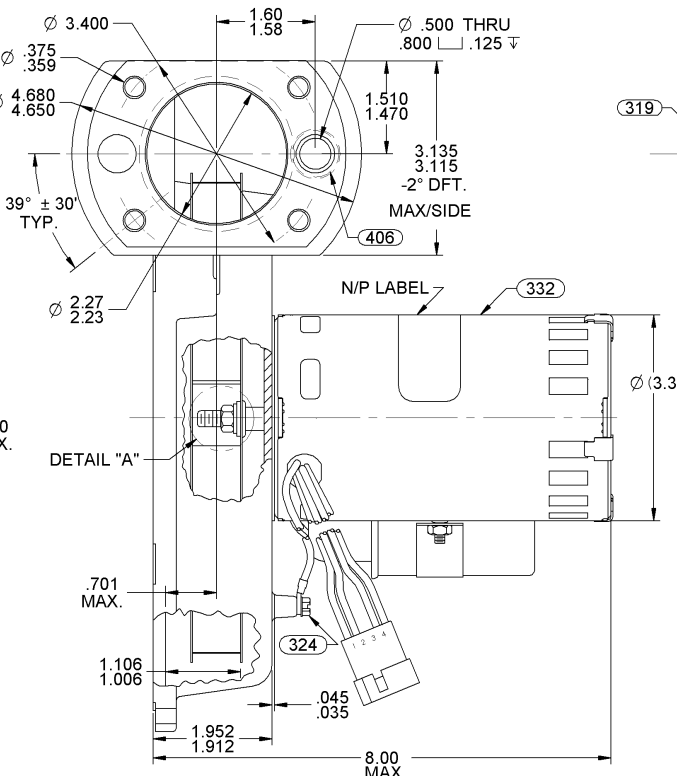
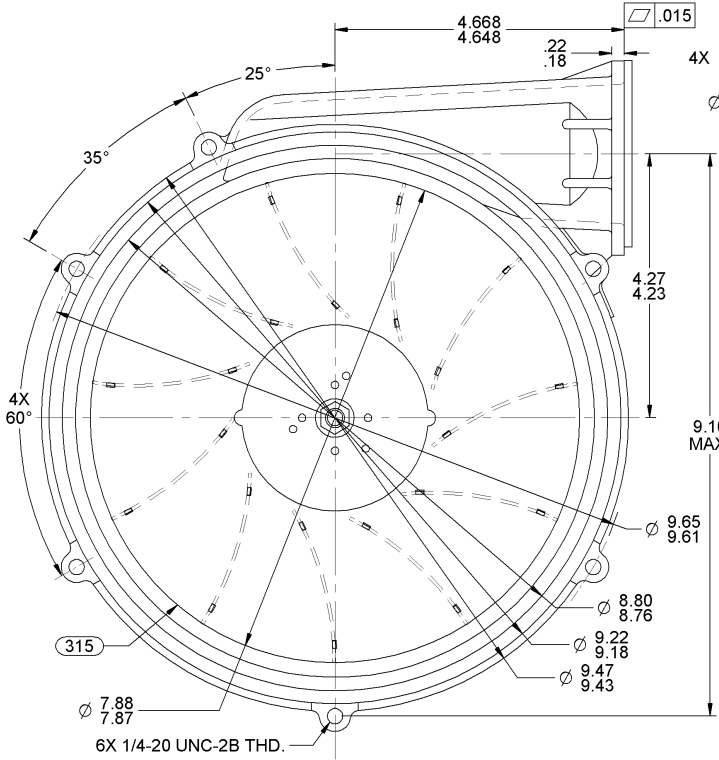
This is an uncontrolled document once printed or downloaded and is subject to change without notice. Date Created: 07/11/2019

NOTES:

- TO OBTAIN THE 1.106/1.006 IMPELLER LOCATION, PC 143 MUST BE PRESSED ON SHAFT.
- PACK 1 PER CARTON, 12 MAX PER PALLET. PACKING ASSY: 87854663, 6 CARTONS PER LAYER, 2 LAYERS PER PALLET. P.S. 88834200 AND 88834408.
- .031 MAX. AXIAL IMPELLER RUNOUT.
- SEE SPECIFICATION SHEET 63004337 FOR TESTING REQUIREMENTS.
- WASHER PC 358 MUST BE BETWEEN DRIVER AND IMPELLER.
- CAPACITOR RATING: 6 MFD/440 VAC.
- CARTON LABELS MUST ALL FACE ONE DIRECTION TOWARD THE OPEN END OF THE PALLET. SEE P.S. 88834408.
- NO PACKAGING TAPE OVER CARTON LABEL.
- SAFETY WARNING LABEL LOCATION PER BLOWER MOTOR DRAWING.
- PLACE (1) PC 377 GASKET IN PLASTIC BAG AND PLACE IN EACH CONTAINER.



APPLICATION		DISTRIBUTION										
SEALED BALL BEARING CLASS B INSULATION THERMALLY PROTECTED SS 416 SHAFT		B	LA	FR	A	S	C	E	B	A	CUSTOMER: FASCO DIST.	
		92	62	30	F	08	DT	6	0	0	CUSTOMER PART NO. A272	
LEAD MATERIAL 18 GA. 125°C. 2/64 INSUL. X-LINKED POLY. (1) PUR (1) RED, (1) ORN, (1) BLK 14.00/12.00 IN. LONG MEASURED TO BACK OF TERM. HSG. PIN TERMS. 89034153 AMP 350416-1		CAPACITOR LEADS 18 GA. 125° 2/64 INSUL. X-LINKED POLY. (2) BRN 3.50/4.50 IN. LONG W/FLAG TERMS. 89034045 AMP 42742-2 GROUND LEAD 18 GA. 125°C. 2/64 INSUL. X-LINKED POLY, GRN/YEL 6.00/4.00 IN. LONG W/RING TERM. 00081906 AMP 2-34148-1										



TYPICAL PERFORMANCE TEST DATA (SEE 6300 - 4337)  
IN FREE AIR WITH 250 MBH INLET ASSEMBLY  
AT 208 - 230 VOLTS 60 HZ.

ECO. NO.	REV.	DATE	APPROVAL	VOLTS	R.P.M.	WATTS	AMPS
4006059	09	07/19/2012	MLM/KSA	208 V	3500	100	.56
4006368	10	8/21/2012	SED/BGP				
4010227	11	9/4/2013	MLH/SDM	230 V	3525	110	.56
4010431	12	9/27/2013	MLS/PLA				

APPROVALS	DATE
DRAWN ATM	08/11/2005
CHECKED SMM	08/11/2005

UNLESS OTHERWISE SPECIFIED DIMENSIONS ARE IN INCHES TOLERANCES ARE:

FRACTIONS ± 1/16 DECIMALS .XX ± .01 ANGLES XXX ± .005 ± 1°

FINISH COLOR MOTOR: BLACK BLOWER: NATURAL

<b>FASCO</b> FASCO MOTORS GROUP AC MOTOR/BLOWER DIVISION	
CONFIDENTIAL: DO NOT DUPLICATE OR DISCLOSE TO THIRD PARTIES WITHOUT WRITTEN PERMISSION OF FASCO MOTORS GROUP, AC MOTOR/BLOWER DIVISION.	
TITLE: BLOWER ASSEMBLY	
SIZE: B	DWG. NO. 7062 5783
DO NOT SCALE DRAWING	SHEET 1 OF 1
	REV. 12