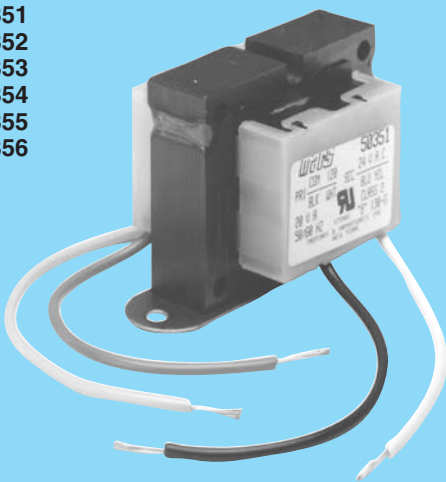


50351
50352
50353
50354
50355
50356



MARS control transformers
NEMA Class II
open construction

MARS compact open construction transformers are less than 2 1/4" in height. This makes them ideal as replacements within existing equipment.

MARS control transformers are available with various outputs and voltages for special applications.

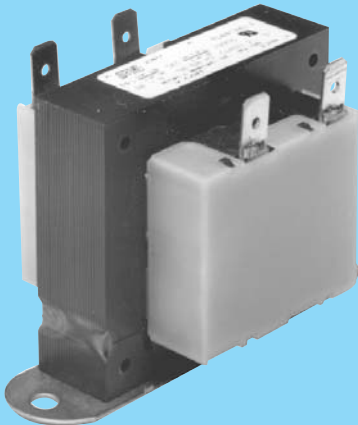
application:

Provide power source for control circuit for air conditioning, heating, or refrigeration systems.

features:

- UL 1585 recognized
- Low heat rise
- Primary color coded leads
- Secondary color coded leads, or 1/4" male quick connects
- Foot-mount
- Made in USA

50361
50362
50363



MARS control transformer
lead color coding:

Common	120	208	277	240	480
White	Black	Red	Brown	Orange	Black with red tracer

foot-mount open construction

MARS NO.	VA RATING	VOLTAGE	PRIMARY HZ	CONNECTIONS	SECONDARY VOLTAGE	SECONDARY CONNECTIONS
50351	20	120	50/60	Color coded leads	24	Color coded leads
50352	40	120	50/60	Color coded leads	24	Color coded leads
50353	40	208/240	50/60	Color coded leads	24	Color coded leads
50354	40	120/208/240	60	Color coded leads	24	Color coded leads
50355*	40	120	60	Color coded leads	12/24	Color coded leads

* Not UL listed

foot-mount open construction with primary & secondary quick connects

MARS NO.	VA RATING	VOLTAGE	PRIMARY HZ	CONNECTIONS	SECONDARY VOLTAGE	SECONDARY CONNECTIONS
50361	20	120	50/60	1/4" Male quick connects	24	1/4" Male quick connects
50362	40	120	50/60	1/4" Male quick connects	24	1/4" Male quick connects
50363	40	208/240	50/60	1/4" Male quick connects	24	1/4" Male quick connects