

Emerson™

# SureSwitch™ relay

**NOW STOCKED IN CDC  
SH/MFR# 49P11-843**

**Universal Electronic Upgrade**  
for Mechanical Compressor Contactors

**49P11-843**



Contactor



Short-Cycle Timer

Brownout Protection



Long-Life Sealed Switch



**5-Year Warranty**

## SureSwitch Benefits

- 5x contactor life
- Sealed to keep out ants and debris
- Microprocessor control nearly eliminates contact welding and pitting
- Ideal install with new PM contract
- Compressor protected from brownouts and short cycling
- Save on pest control treatments



### Sealed Relay Construction

The SureSwitch internal compressor relay is completely sealed from insects and debris.

### General Ratings

Amps:	40 (FLA)	Coil:	24 VAC
Amps:	200 (LRA)	Pole:	1 or 1.5

**NOW RATED 40 AMPS**

White  
Rodgers™

**EMERSON**  
Climate Technologies



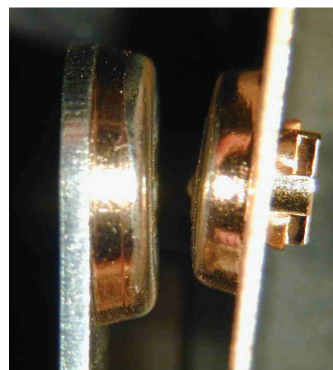
## Universal Electronic Upgrade for Mechanical Compressor Contactors

### Features

- Microprocessor controlled sealed compressor switching
- Line voltage brownout protection
- Short cycle protection
- Tricolor LED displays
- Heavy-duty lug connectors
- Zero chatter latching relay
- Four-hole mounting matches mechanical contactors
- Random start delay on power up and brownout recovery
- Compressor test and cycle count by pushbutton

### Performance Tested

The SureSwitch sealed relay has undergone exhaustive testing on Copeland 5-ton scroll compressors to demonstrate ultimate reliability. This technology has been utilized on OEM controls since 2006 and is now available for the Aftermarket.

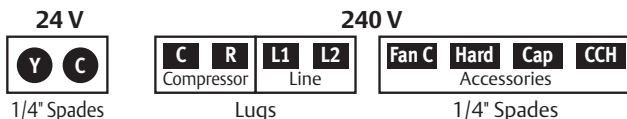


Contacts after one million cycle testing.

### 5x Contactor Life

Microprocessor controlled switching algorithms reduce arcing, virtually eliminating contact pitting and welding.

### Terminal Designations



### LED Flash Codes

Slow <b>Green</b>	Standby
Solid <b>Green</b>	Normal
Fast <b>Green</b>	Delay
<b>Green / Red</b>	Low Line Volt.
<b>Green / Yellow / Red</b>	Test

### Specifications

#### Electrical Ratings

Line Voltage Input .....	240 VAC, 50/60 Hz
Full Load Amperes (FLA) .....	40A
Locked Rotor Amperes (LRA) .....	200A
Control (Coil) Voltage (Y, C) .....	24 VAC, 50/60 Hz

#### Recommended Terminal Torque – C, R, L1 and L2

#4 – 6 AWG .....	45 in-lbs
#8 AWG .....	40 in-lbs
#10 – 14 AWG .....	35 in-lbs
24 VAC (Y, C) Terminals are 1/4" Male QC's accepting #12-24 AWG wire	

#### Timings

Anti-Short-Cycle Delay .....	0s or 180s (selectable) at 60 Hz
	0s or 216s (selectable) at 50 Hz
Compressor Test .....	5s at 60 Hz
	6s at 50 Hz

#### Dimensions

2-3/4" W x 2-3/8" H x 3-7/8" L

#### Operating Temperature Range

-40° to 158° F (-40° to 70° C)

#### Humidity Range

5 to 95% relative Humidity (non-condensing)

#### For Additional Information

Scan QR Code or visit us at [www.white-roddgers.com](http://www.white-roddgers.com)

#### Agency Approval Pending



For Ultimate Copeland Scroll™  
Protection, install  
CoreSense™ Protection