

Notes: C-Frame motor with centrifugal switch

Coleman Evcon

Replaces

7990-317P 7102-2187

Item ID	K629
Stack Size (In.)	1
H.P.	1/85
Volts	115
RPM	2950
Amps	0.67
Speeds	1
Rotation	CW
Shaft Dimension (In.)	1/4 x 1 1/8
Type	Shaded Pole
Bearings	Sleeve
Enclosure	Open
Hertz	60
Overload	Automatic



Dunkirk

Replaces

433-00-510

Item ID	82052
H.P.	1/50
Volts	115
RPM	3000
Amps	1.00
Speeds	1
Type	Shaded Pole
Bearings	Sleeve
Enclosure	Open
Hertz	60
Overload	Automatic

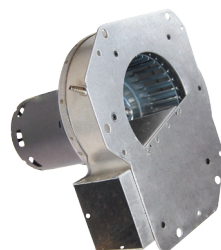
Fedders

Replaces

031-7059



Item ID	82618
H.P.	1/35
Volts	115/230
RPM	3000
Amps	0.90/0.45
Speeds	1
Type	Shaded Pole
Bearings	Ball
Enclosure	Open
Hertz	60
Overload	Automatic



Goodman

Replaces

11009001 11009002 11009003

Item ID	66003
Volts	115
RPM	3250
Amps	0.92
Speeds	1
Type	Shaded Pole
Bearings	Sleeve
Enclosure	Open
Hertz	60
Overload	Automatic

Goodman

Replaces

5KSB46GF0001S B4833000



Item ID	48331
Volts	115
RPM	3200
Amps	1.80
Speeds	1
Type	Shaded Pole
Bearings	Ball
Enclosure	Open
Hertz	60
Overload	Automatic
Includes	Rubber Boot



Goodman

Replaces

5KSB46GF0003S B48330001

Item ID	48332
Volts	115
RPM	3200/2800
Amps	1.80/1.10
Speeds	2
Type	Shaded Pole
Bearings	Ball
Enclosure	Open
Hertz	60
Overload	Automatic
Includes	Rubber Boot

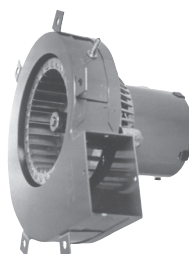
Goodman

Replaces

B1859000 B1859000S



Item ID	82483
H.P.	1/50
Volts	115
RPM	3000
Amps	1.00
Speeds	1
Type	Shaded Pole
Bearings	Ball
Enclosure	Totally Enclosed
Hertz	60
Overload	Automatic



Goodman

Replaces

B1859000 74-70-21964-03-01

Item ID	A079
H.P.	1/50
Volts	115
RPM	3000
Amps	1.10
Speeds	1
Type	Shaded Pole
Bearings	Sleeve
Enclosure	Totally Enclosed
Hertz	60
Overload	Automatic