

## Schedule 40 PVC Fittings - Tees S x S x S

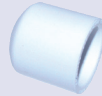
- NSF approved



ITEM NO.	DESCRIPTION	STD QTY	CTN QTY	U M
0319	[401-005] Tee, 1/2" S x S x S	50	300	EA
0349	[401-007] Tee, 3/4" S x S x S	50	300	EA
0369	[401-010] Tee, 1" S x S x S	50	200	EA
0403	[401-025] Tee, 2-1/2" S x S x S	10		EA

## Schedule 40 PVC Fittings - Slip Caps

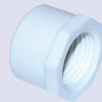
- NSF approved



ITEM NO.	DESCRIPTION	STD QTY	CTN QTY	U M
0315	[447-005] Cap, 1/2" Slip	100	1200	EA
0345	[447-007] Cap, 3/4" Slip	50	600	EA
0365	[447-010] Cap, 1" Slip	50	300	EA
0382	[447-015] Cap, 1-1/2" Slip	25	150	EA
0391	[447-020] Cap, 2"	10	80	EA
0404	[447-025] Cap, 2-1/2"	10	60	EA
0421	[447-030] Cap, 3"	10	40	EA

## Schedule 40 PVC Fittings - Threaded Caps

- NSF approved



ITEM NO.	DESCRIPTION	STD QTY	CTN QTY	U M
17720	[448-005] 1/2" Threaded Cap (FPT)	100	1200	EA
17721	[448-007] 3/4" Threaded Cap (FPT)	50	600	EA

## Schedule 40 PVC Fittings - Plugs

- NSF approved



ITEM NO.	DESCRIPTION	STD QTY	CTN QTY	U M
0354	[450-007] 3/4" Threaded Plug	100	1200	EA
0359	[449-007] 3/4" Slip Plug	50	600	EA

## Schedule 40 PVC Fittings - Bushings

- NSF approved



ITEM NO.	DESCRIPTION	STD QTY	CTN QTY	U M
0352	[437-101] Bushing, 1/2" S x 3/4" S	50	60	EA
0313	[438-101] Bushing, 3/4" S X 1/2" FPT	100	800	EA
16268	[437-131] Bushing, 3/4" S x 1" S	50	400	EA
0425	[437-251] Bushing 1-1/2" S x 2" S	10	80	EA
0426	[437-292] Bushing 2" S x 2-1/2" S	10	60	EA
0427	[437-339] Bushing 2-1/2" S x 3" S	15	90	EA
0428	[437-338] Bushing 2" S x 3" S	10	40	EA

## Schedule 40 PVC Fittings - Ball Valves

- Pressure rating @ 73°F, water: 150 PSI
- Maximum service temperature 140°F
- EPDM O-ring seal



ITEM NO.	DESCRIPTION	STD QTY	U M
0405	[8722-005] 1/2" PVC Ball Valve SxS	5	EA
0406	[8722-007] 3/4" PVC Ball Valve SxS	5	EA
0407	[8722-010] 1" PVC Ball Valve SxS	5	EA

## DWV Fittings - Reducing Couplings

- NSF
- ASTM D2665



ITEM NO.	DESCRIPTION	STD QTY	CTN QTY	U M
0384	[102-251] 2" x 1-1/2" Reducing Coupling	25	100	EA
0414	[102-338] 3" x 2" Reducing Coupling	20	80	EA
0430	[102-422] 4" x 3" Reducing Coupling	20		EA