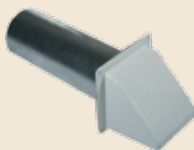


Plastic Wide Mouth Vent Hood

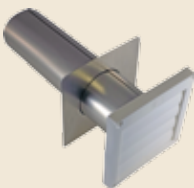
- 11" fully assembled, riveted tailpipe
- Aluminum trim plate
- Back-draft flapper
- This hood is not recommended for dryer venting
- 1/2" x 1/2" pest grid
- Grid snaps in and removable for cleaning



ITEM NO.	DESCRIPTION	STD QTY	U M
20320	[111381] 4" White Hood	8	EA
20321	[111384] 4" Brown Hood	8	EA
20327	[111391] 4" White Hood, Faceplate	8	EA

Louvered Plastic Hood

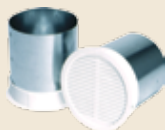
- Polypropylene molded plastic
- Molded snap ring for easy connection to pipe
- Four free swinging louvers
- Aluminum trim plate
- Aluminum tailpipe
- 4 mounting holes
- Fully Assembled



ITEM NO.	DESCRIPTION	STD QTY	U M
20317	[110280] 3" White Hood	12	EA
20355	[110281] 3" Brown Hood	12	EA
20318	[110282] 4" White Hood	12	EA
20319	[110283] 4" Brown Hood	12	EA

Bathroom Fan Eave Vents

- Used to vent bathroom exhaust
- 4" length
- White plastic construction



ITEM NO.	DESCRIPTION	STD QTY	U M
15052	[BFEV4] 4" Bathroom Fan Eave Vent	12	EA

Rotaire® Under Eave Vent

- 2-piece snap in plastic design hides mounting screws
- Includes a screen inside the vent
- Louvers rotatable
- Tabs to hold duct in place



ITEM NO.	DESCRIPTION	STD QTY	U M
13055	[3940WH] 4" Rotaire Eave Vent - White	24	EA
13056	[3940BR] 4" Rotaire Eave Vent - Brown	24	EA

Egg Crate Louvers

- White polystyrene
- 1/2" open cell grid



ITEM NO.	DESCRIPTION	STD QTY	PLT QTY	U M
13833	3/8" Thick 2' x 4' Louver	15	360	EA
13834	1/2" Thick 2' x 4' Louver	10	360	EA
13885	1/2" Thick 2' x 2' Louver	20	360	EA

Poly-Flo™ Air Filter Media

- 100% polyester construction
- Cleans easily with water
- Cuts to any opening with scissors
- Rigid construction - needs no frame
- Low resistance to air flow - saves money!
- Fibers are unaffected by moisture
- Safe to handle - no fiberglass or sharp edges
- Bi-directional air flow
- High dust retention
- Flame retardant UL Class II
- self extinguishing FMVSS 302 Certified



ITEM NO.	DESCRIPTION	STD QTY	U M
20800	25" x 36' x 1" Poly-Flo Filter	1	RL
20806	16" x 20" x 1" Poly-Flo Filter	12	EA
20807	16" x 25" x 1" Poly-Flo Filter	12	EA
20808	20" x 20" x 1" Poly-Flo Filter	12	EA
20809	20" x 25" x 1" Poly-Flo Filter	12	EA
20810	20" x 30" x 1" Poly-Flo Filter	15	EA

Grill Mounting Clip

- Used to mount a register grill onto duct board
- Extra slots for use 1-1/2" & 2" duct board.



ITEM NO.	DESCRIPTION	STD QTY	U M
20410	Grill Mounting Clip	100	EA