

# Self-Fastening Shields

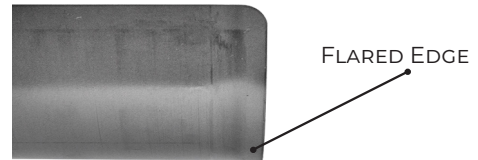
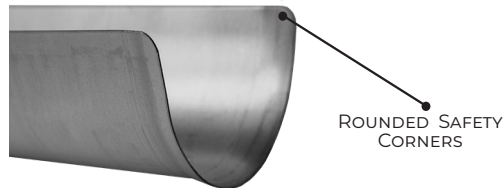
Designed for protection of foam, fiberglass, or high density insulation when used with pipe hangers.

Series: 1551 & 1552

Size: 1 1/2" - 12"

Material: Carbon Steel

Finish: Galvanized



### Rounded Safety Corners

Reduces the risk of injury to installer



### Flared Edge

Reduces potential insulation tearing

Part # 10"	Part # 12"	Size	Tabs*	Packaged
1552-1.5	1551-1.5	1 1/2"		50
1552-2	1551-2	2"	✓	50
1552-2.5	1551-2.5	2 1/2"		50
1552-3	1551-3	3"	✓	50
1552-3.5	1551-3.5	3 1/2"		50
1552-4	1551-4	4"	✓	50
1552-5	1551-5	5"	✓	50
1552-6	1551-6	6"	✓	50
1552-8	1551-8	8"		50
1552-10	1551-10	10"		50
1552-12	1551-12	12"		50

\*Foldable tabs keep Clevis in place!  
SEE BELOW



Easy to use



Secures shield to clevis without the need for welding