

# COMBINATION CONTROLS

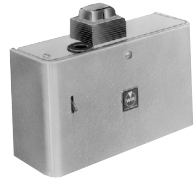
## White-Rodgers

### Remanufactured Combination Controls

Combines: cad cell relay, low limit, high limit, reverse acting and circulator relay.

**FEATURES:**

- 2-wire, 24v thermostat circuit.



#### FOR BOILERS SUPPLYING DOMESTIC HOT WATER

Ref #	Insertion	Mounting	Reman#
693-2	Well	Fixed	R80-70R
683-2	Well	Fixed	R80-72R
6C93-2	Well	Fixed	R80-75R
6C93-5, 8, 9, 10	36" remote	Hinged	R80-76R
6C93-5, 8, 9, 10	36" remote	Fixed	R80-77R

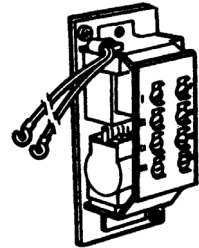
#### FOR BOILERS NOT SUPPLYING DOMESTIC HOT WATER

6C92-2	Well	Fixed	R80-80R
6C92-5, 8, 9, 10	36" remote	Hinged	R80-81R
6C92-5, 8, 9, 10	36" remote	Fixed	R80-82R

## White-Rodgers

### Remanufactured Oil Control Parts

Ref #	Description	Reman#
145-0171	Burner control assembly for 6C92-8, 6C93-8, 6C93-16	R80-90R
68-0371	Circulator relay transformer assembly for 6C93 types	R80-91R
68-0373	Circulator relay transformer assembly for 6C92 types	R80-92R



## Honeywell

### Remanufactured Stoker Relays

#### 2 WIRE, SERIES 80

Ref #	Volts	Firing Rate	Reman#
R883B	120	Every 30 or 60 min. for 1/2 - 7-1/2 min.	R106-3R
R883B	240	Every 30 or 60 min. for 1/2 - 7-1/2 min.	R106-5R
R883B	120	Every 15 or 30 min. for 1/4 - 3-3/4 min.	R106-7R



#### 3 WIRE, SERIES 10

R183B	120	Every 30 or 60 min. for 1/2 - 7-1/2 min.	R106-9R
-------	-----	--	---------

#### 2 WIRE, SERIES 40

S400B	120	Every 30 or 60 min. for 1 - 7-1/2 min.	R106-11R
-------	-----	--	----------

**NOTE:** Remanufactured products available only on exchange for similar defective units.